



GENUINE MEGA.

MMP

APPLICATIONS FOR CATERPILLAR®



MMP-MEGA MOBILE PUMP





STANDARD FEATURES

Diesel Engine -CATERPILLAR® C2.2T T4i*/ 60 HP
Battery -BCI Maintenance Free 12V
190 liters (50 gallons) Diesel Tank
Hydraulic Pump
87 liters (23 gallons) Hydraulic Tank
Chevron Clarity AW46 Hydraulic Oil (Biodegradable)
Hitch Assembly-4,536 kg (10,000 lb) Rated with 59mm (2 5/16 inch) Ball
Tires -Titan Radial ST235/80R16 Load Range E
Full Fenders
3 Jacks with Adjustable Height Settings
DOT Lighting and Reflectors
Folding Tongue for Maximum Loading Access
Hydraulic Oil Filter
Engine Throttle, Controls and Instrumentation
Caterpillar Hose and Fittings -Reusable Stems and Sleeves
Hydraulic Pressure Gauge
Trash Screen on Pump Inlet
One Person Transport and Set Up
Tool Storage Area in Battery Box
Intake and Discharge Tube Are Fully Adjustable
Anti-Vacuum Discharge Sock



Highway capable chassis. One person operation for travel, set up and use.

OPTIONAL FEATURES

Other Diesel Engines May Be Available
Electric Brakes
Securable Spare Tire and Rim
Electric Hookup for Trucks
Wireless Remote Start/Stop
Security Package - Call Mega for Details
Hitch Assembly With Either Lunette Eye (Pintle) or Clevis Hitch

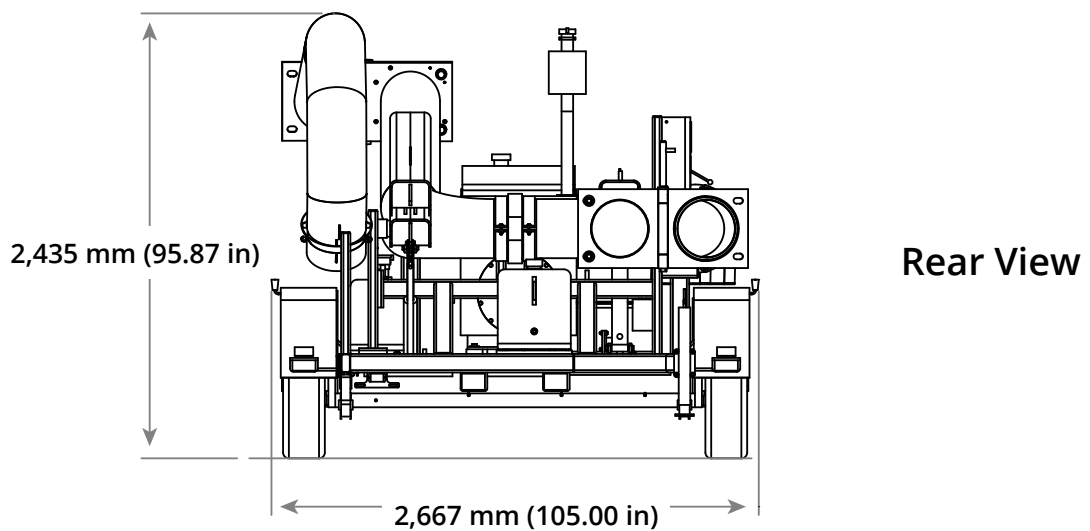
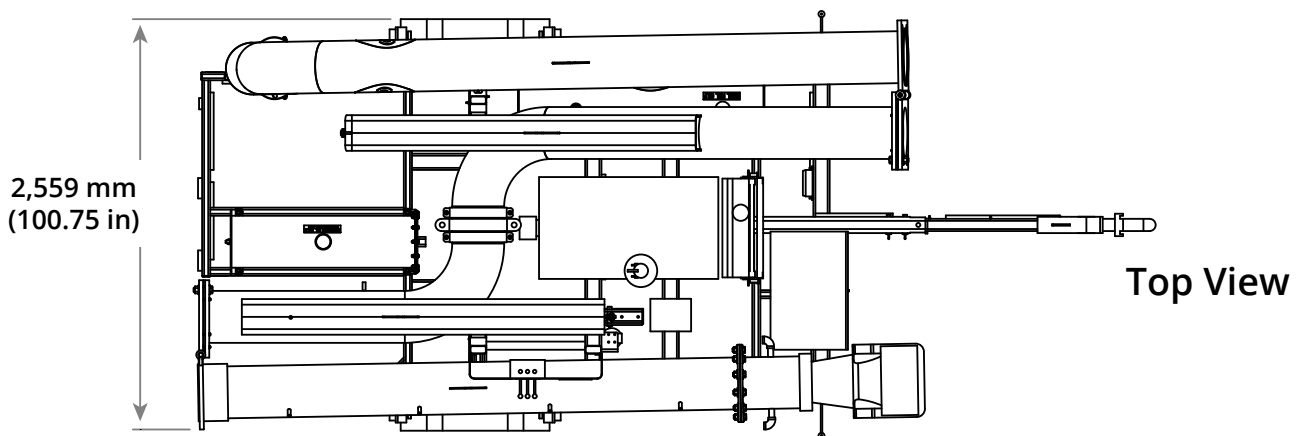
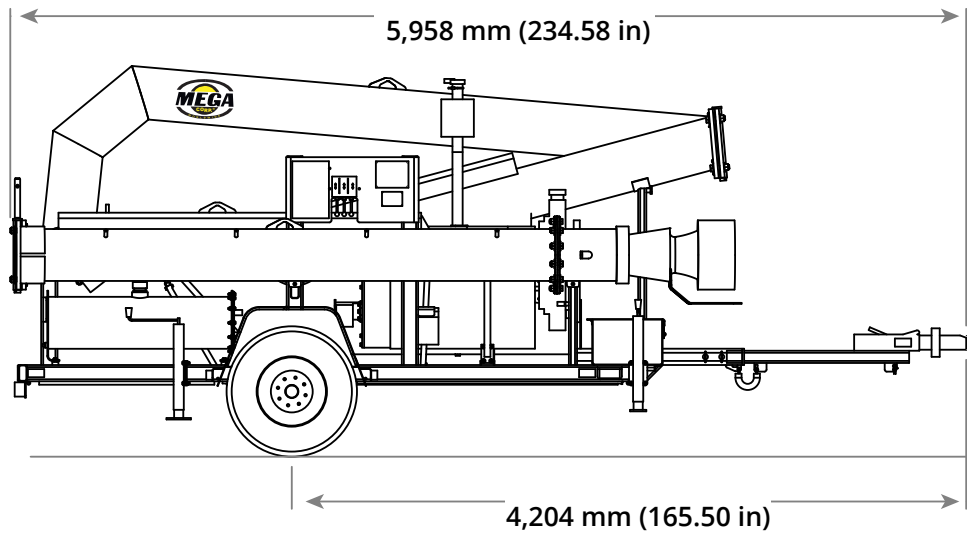


Rated at 13,248 liters (3,500 gallons) per minute.

*CUMMINS® and JOHN DEERE® engine options available. Please look at our other MMP4 brochures available on our website or call one of our sales representatives at 1-800-345-8889.

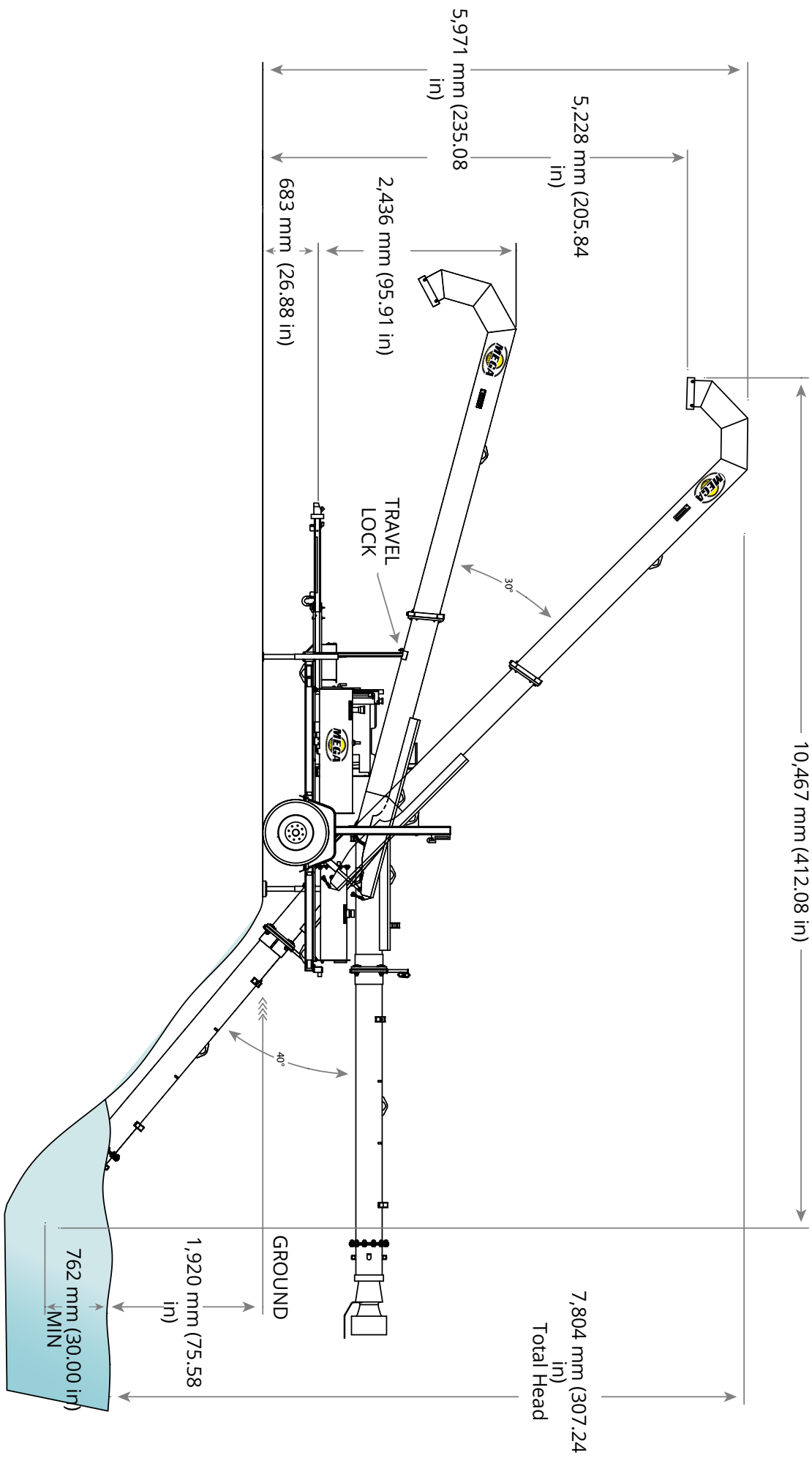


MMP-MEGA MOBILE PUMP-TRANSPORTATION DIMENSIONS



To download a PDF of this drawing please go to our website at www.megacorpinc.com and go to our MMP equipment page.

MMP-MEGA MOBILE PUMP EXTENDED



To download a PDF of this drawing please go to our website at www.megacorpinc.com and go to our MMP equipment page.

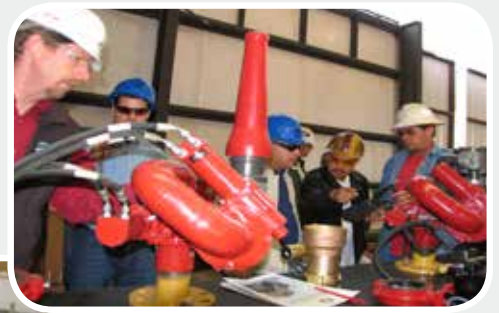


GLOBAL PRODUCT SUPPORT

Parts and Product Support available 24 hours a day, seven days a week.

Mega's product support team provides full-time technical support including parts sales, on-site field assistance, training and after-hours emergency parts service. Mega maintains a complete inventory of repair and maintenance parts for all of its products including accessory kits and support packages for immediate shipment. vMega parts are available from our website at:

www.megacorpinc.com



Se Habla Español!



Recommended Support Parts Package

Out in the field? Need parts? Our spare parts package can be custom configured for single tanks to entire fleets. Please contact us at 1-800-345-8889 or your sales representative for more information.



Visit our website for more information on our parts at www.megacorpinc.com!

We Reach Out Globally to Take Care Of You



Wherever you are in the world, we are here to help and to ensure you get the best quality, most effective, most durable water tank built. Mega has been responsible for the design, development, manufacture, marketing and sale of products used in surface mining and construction projects worldwide.

Mega's products include all varieties of water haulage equipment, 34 yard elevating scrapers, coal haulers, bottom-dump trailers, equipment transports, specialty dumper bodies, mobile pumps, and stand tanks, as well as parts service and technical support. Mega's products are manufactured at its headquarters in Albuquerque, New Mexico, U.S.A. as well as by its partners in Chile, Columbia, South Africa, United Kingdom, India and Australia.



Full-time Quality Control Inspection Staff

- Inspection of weldment to AWS D1.1 standard during and after fabrication.
- Compliance with applicable SAE ISO, and DOT standards.
- Complete product documentation including drawings, parts and operation manuals.
- Fully functional 60+ minute operation of all installed products prior to shipment.
- Compliance with Caterpillar® hydraulic cleanliness specifications including use of Caterpillar® hydraulic kidney system and particle inspection of hydraulic oil samples.



Support Material

Mega offers a full-line of publications for its products including operator, service, parts and maintenance manuals as well as drawings for installation guides and schematics.

Warranty Coverage For Your Mega Equipment

Protecting your investment.



Mega provides a full one year warranty, unlimited hours against defects in materials and workmanship.



STANDARD WARRANTY POLICY

Effective With Deliveries to the First User On or After March 1, 2006



Mega Corp. warrants its products against defects in material and workmanship for a period of twelve months from the time the unit is first placed into service unless stated otherwise below.

Mega Corp. does not warrant malfunctions and failures resulting from misuse, negligence, alteration, accident, or lack of performance of regular maintenance services, nor does it include the replacement of maintenance items made in connection with normal maintenance services. In addition, travel mileage, travel labor, or related travel expenses (such as meals or lodging) will not be covered.

Mega Corp. requires the customer/owner to complete the In-Service report and return it to Mega Corp. within 30 (thirty) days from the date the machine is placed into service. In addition, in-service must begin no later than 1 year from receipt of the machine unless otherwise stated in the sales contract.

This warranty becomes null and void when the product is disassembled, welded-upon, or in any way materially altered without prior written approval from Mega Corp.

Items replaced under this warranty become the property of Mega Corp. All items replaced must be returned to Mega Corp., freight pre-paid.

Responsibilities

Mega Corp. Responsibilities

If a defect in material or workmanship is found during the warranty period, Mega Corp. will:

- Provide (at Mega Corp.'s discretion) new, remanufactured or Mega Corp.- approved repaired parts or assembled components needed to correct the defect.
- Replace lubricating oil, filters, anti-freeze and other items made unusable by the defect.
- Provide reasonable or customary labor needed to correct the defect, including labor for removal and installation when necessary to make the repair.

User/Customer Responsibilities

The user/customer is responsible for:

- Contacting Mega Corp. for authorization prior to the repair.
- Providing Proof of the Delivery Date (via the In-Service Report) to Mega Corp.
- The cost associated with transporting the product or warranty item to the place of repair.
- Costs to investigate complaints, unless the problem is caused by a defect in Mega Corp. materials or workmanship.
- Labor costs except as stated under "Mega Corp. Responsibilities".
- Premium or overtime labor costs.
- Local taxes, if applicable.
- Giving timely notice of a warrantable failure and promptly making the product available for repair.
- Performance of required maintenance and items replaced due to normal wear.
- Allowing Mega Corp. access to any electronically stored data relevant to the warranted product's application.

Special Coverage Limitations

Structural Failure

Structural failures are described as:

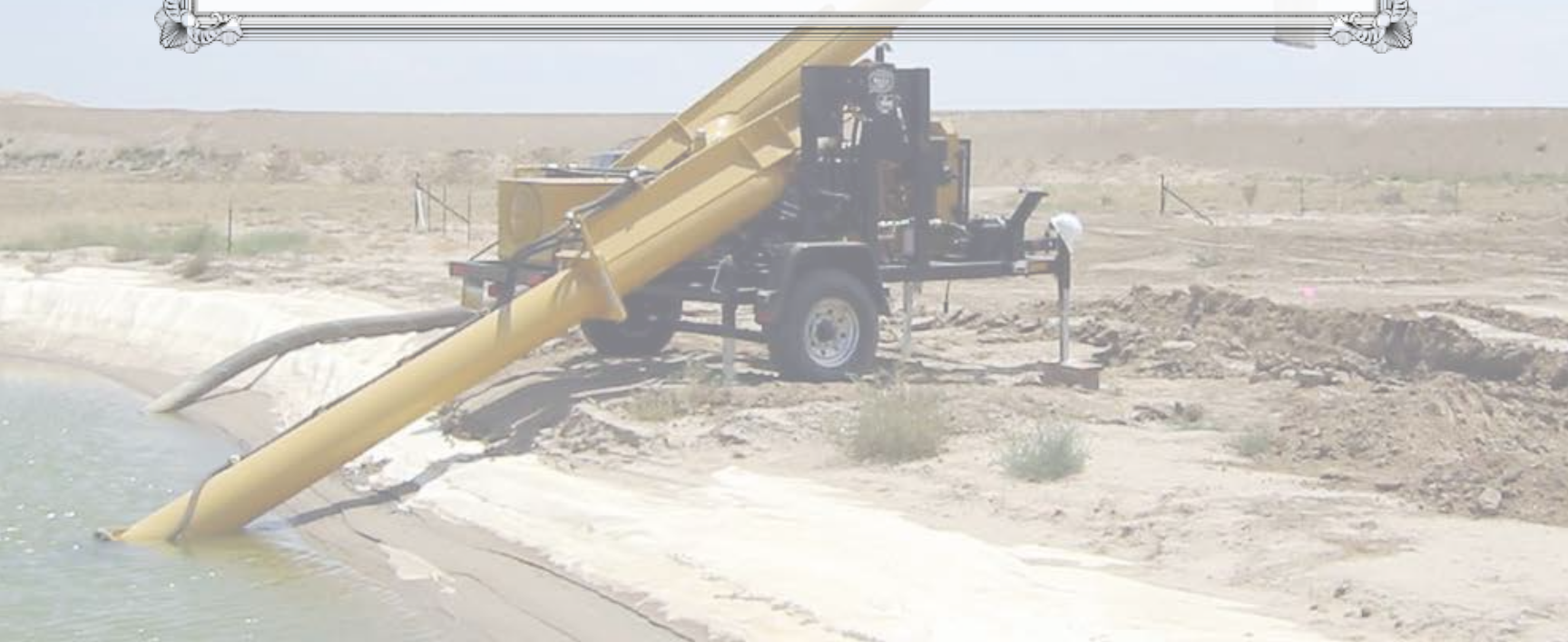
Cracking in weld or base metal of structure not caused by damage or abuse.
Water leaks from tanks due to cracking or weld defect.

Kits For Field Installation

Mega products provided in kit form are designed for field assembly/installation and are covered under the terms of this warranty with the following provisions:

Installation - Mega Corp. will provide a basic set of drawings for use with installation of products delivered in kit form. These drawings are intended to assist the dealer / customer with installation. Mega Corp. Product Support may be contacted for additional assistance if required. Charges may apply for this service.

Parts - Mega Corp. guarantees that all Mega supplied parts required for field installation will be in the Field installation parts kit. There may be parts that are expected to be supplied by the customer to complete installation. Mega Corp.-supplied parts will be detailed on the installation drawings. Packing lists are supplied with all kits. The customer is responsible for notifying Mega Corp. of missing or damaged parts upon receipt. Signed copies of the packing lists confirming receipt of all parts must be returned to Mega Corp. within 14 days of receipt of parts to maintain this coverage.



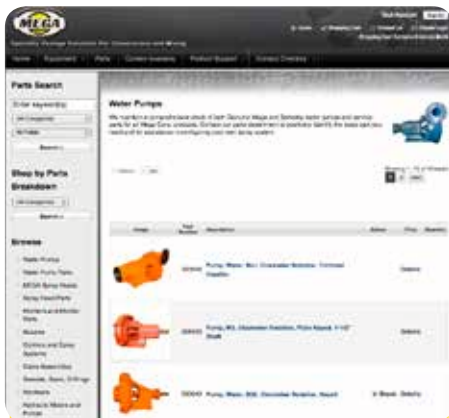
CHECK US OUT ON THE WEB @ WWW.MEGACORPINC.COM

ONLINE PARTS ORDERING IS NOW AVAILABLE!



In response to customer requests, Mega has added online ordering capability to our website. Customers can browse through approximately 700 of our most commonly-ordered parts and place orders using both PO's and credit cards.

Customers will need to register on-line to access this service. Pricing on the web, including any applicable discounts and shipping, will be the same as if the order were placed via telephone. Along with parts ordering, Mega has refreshed the look and functionality of the website to improve its use. Check us out at: www.megacorpinc.com.



*Order
Parts!*



*Illustrated Parts
Breakdowns!*



*Go Online
TODAY!*



© 2014 Mega Corp. All rights reserved.
REV-06-2014

For more information please visit us
on the web at www.megacorpinc.com

MEGA Corp. and its respective logos as well as corporate and product identity used herein, are trademarks of Mega Corp. and may not be used without permission.

MEGA retains all copyrights in any text, graphic images, and content owned by MEGA Corp. and hereby authorizes you to electronically copy documents published herein solely for the purpose of transmitting or viewing the information.

You may not mirror, modify or otherwise alter any files for rebroadcast, or print the information contained therein, without written permission from MEGA Corp.

Materials and specifications are subject to change without notice. Featured machines in photos may include additional equipment. See your dealer for available options.